



Calgary and Area Regional Collaborative Service Delivery Working Together for Children and Youth

Overview for Student Threat Assessment Learning Event

www.CalgaryandAreaRCSD.ca

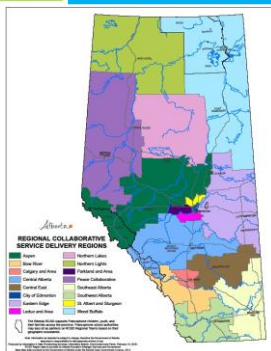


What is Regional Collaborative Service Delivery (RCSD)?

- A provincial partnership between Alberta Health, Alberta Health Services, Alberta Children’s Services, Alberta Community and Social Services and Alberta Education.
- A collaborative approach to planning and service delivery to ensure that children, youth and families have access to the supports they need to be successful at school, at home and in their community.



17 RCSD Regions



- Northern Lights RCSD
- Wood Buffalo RCSD
- Peace Country RCSD
- Northern Lakes RCSD
- Aspen Collaborative Services RCSD
- Parkland Evergreen and Area RCSD
- St. Albert and Sturgeon RCSD
- Edmonton RCSD
- Eastern Edge RCSD
- Leduc and Area RCSD
- Central Alberta RCSD
- Bow River RCSD
- **Calgary and Area RCSD**
- Central East Collaborative RCSD
- Southwest Alberta RCSD
- Southeastern Alberta RCSD
- Réseau RCSD



Provincial Vision

- Children and youth reach their full potential.
 - Children and youth are successful
 - Children and youth are healthy
 - Children, youth, and their families are secure and resilient



Provincial Goal

- **Relevant regional supports and services** meet the needs of children and youth in the context of their schools, families and communities in the most **effective and efficient** manner possible.



How is RCSD supported?

- Funding from the Government of Alberta to support collaboration and enhance supports for children and youth.
- Funding is pooled and shared by regional partners to address identified needs and priorities within their region.
- RCSD partners are the stewards of shared resources.



What RCSD is not

- RCSD is not a service or program, but a collaborative approach of partners working together to streamline, integrate and allocate resources within a geographical area.
- RCSD is not a replacement of other funding sources, but an enhancement of services for children and youth.



What We Do

- Build the capacity of educators and other school staff, families, services providers and community providers through cross-sector training, planning and networking.
- Provide transition planning between and across sectors and service systems.
- Coordinate services for children, youth and families



RCSD Promotes:

- Regional autonomy and decision-making with provincial accountability
- Building and customizing service capacity at the local community level
- Shared learning and leveraging successes across the province
- A culture that supports collaboration at the system planning and front-line levels
- A collaborative governance structure that can be leveraged for other related work



Calgary and Area RCSD Partners

- Parents, Children, Youth and Families
- Alberta Health Services
- Alberta Children's Services
- Alberta Community and Social Services
- Calgary and Area Private Schools
- Calgary and Area Charter Schools
- Calgary Board of Education
- Calgary Catholic School District
- Christ the Redeemer Catholic Schools
- Palliser Regional Schools
- Rocky View Schools
- Tsuut'ina Nation



Thank You!

Calgary and Area RSCD Regional Manager

- **Janice Popp**, MSW, RSW
(janice.popp@cssd.ab.ca)

Website and newsletter sign up:

<http://www.calgaryandarearcsd.ca/>